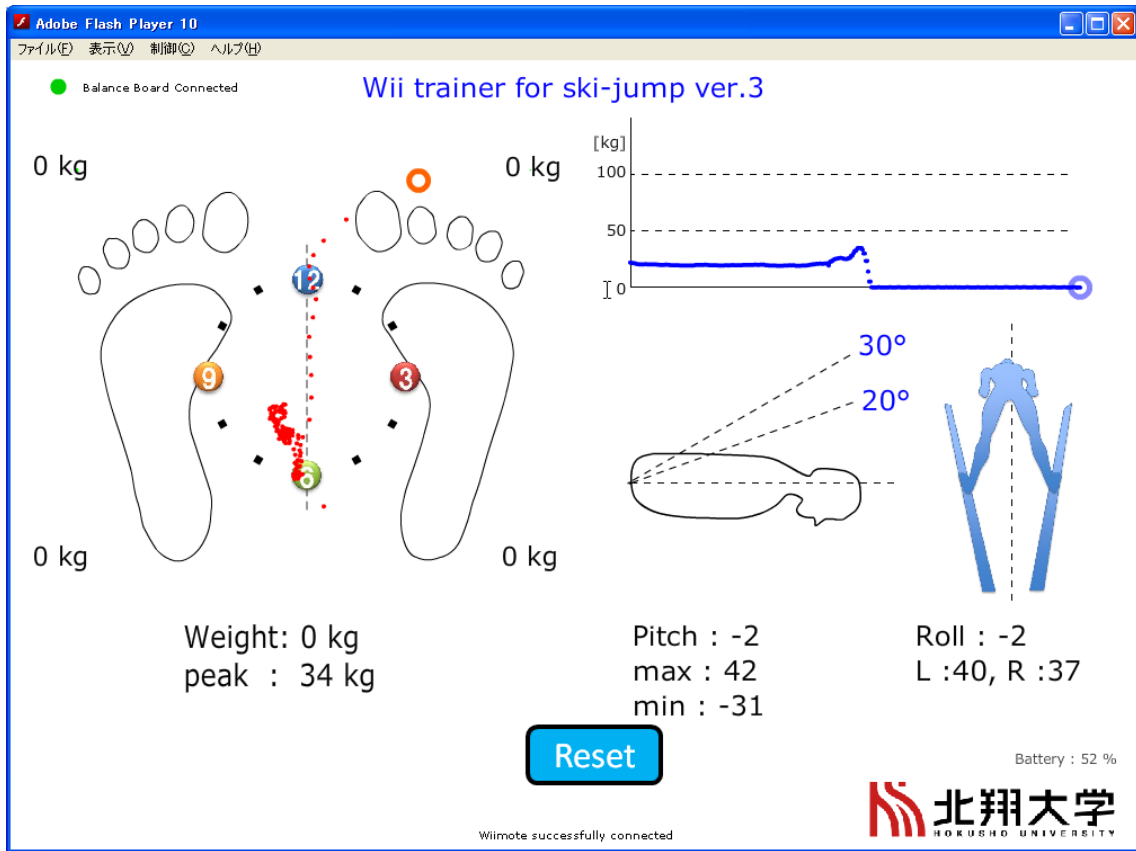
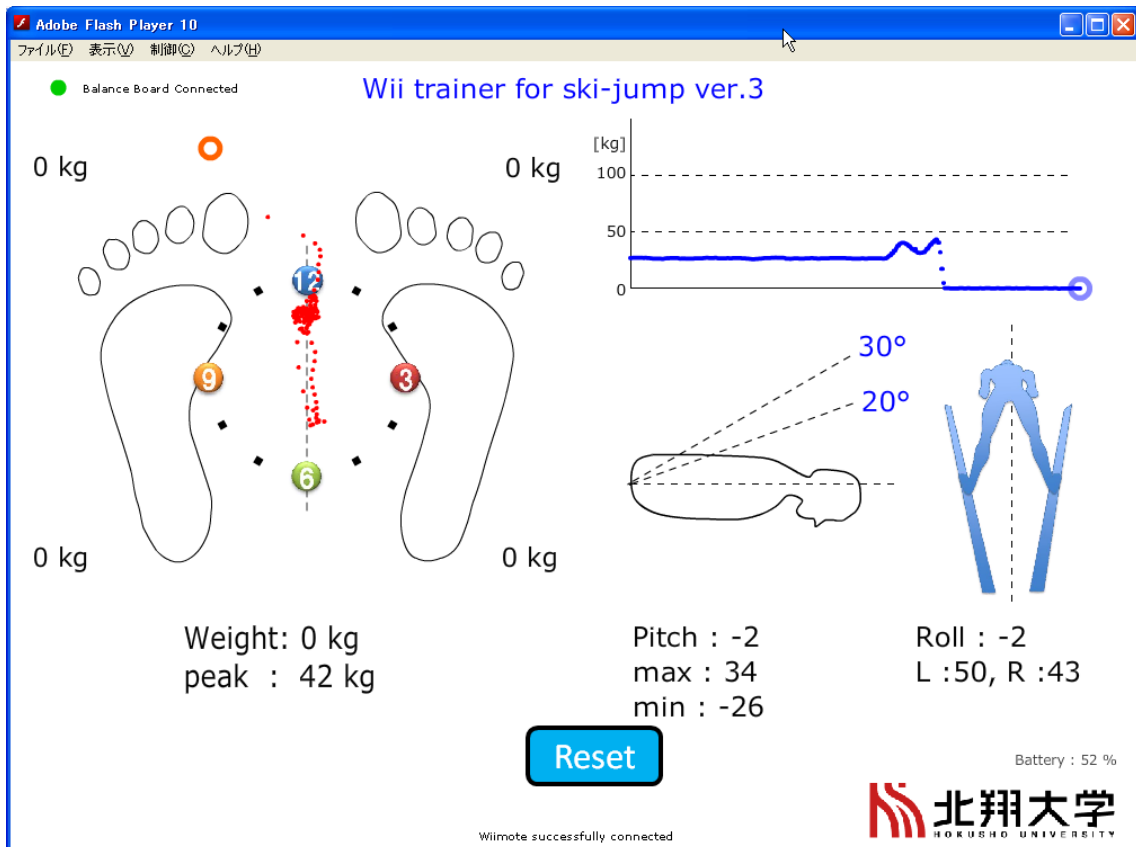


2011-05-08

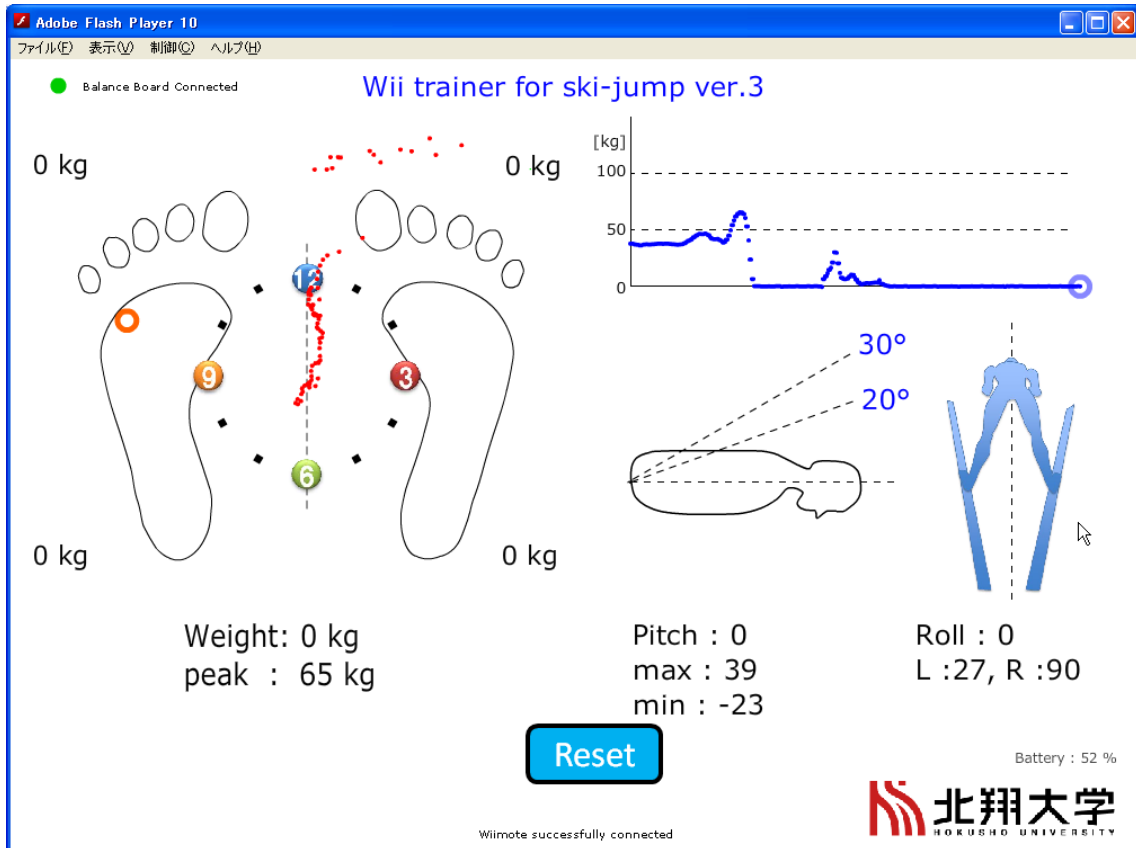
千葉 (大) 選手



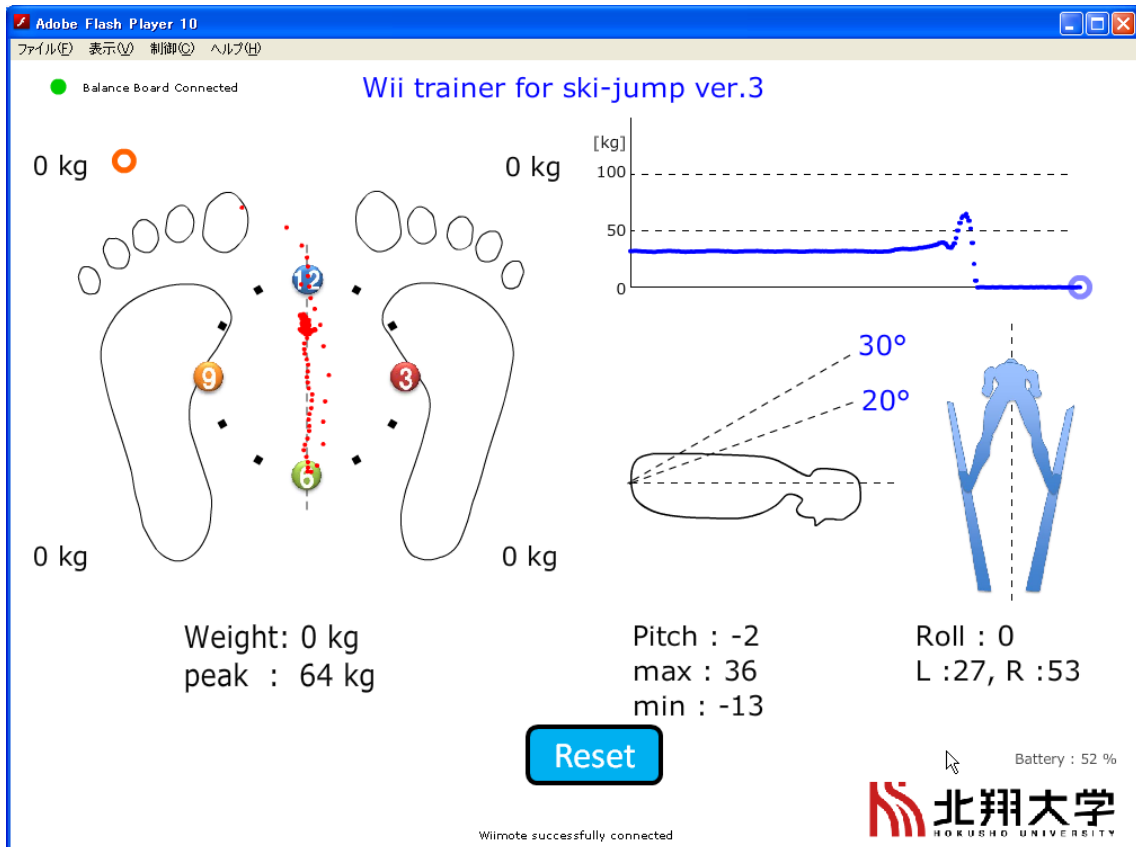
千葉 (悠) 選手



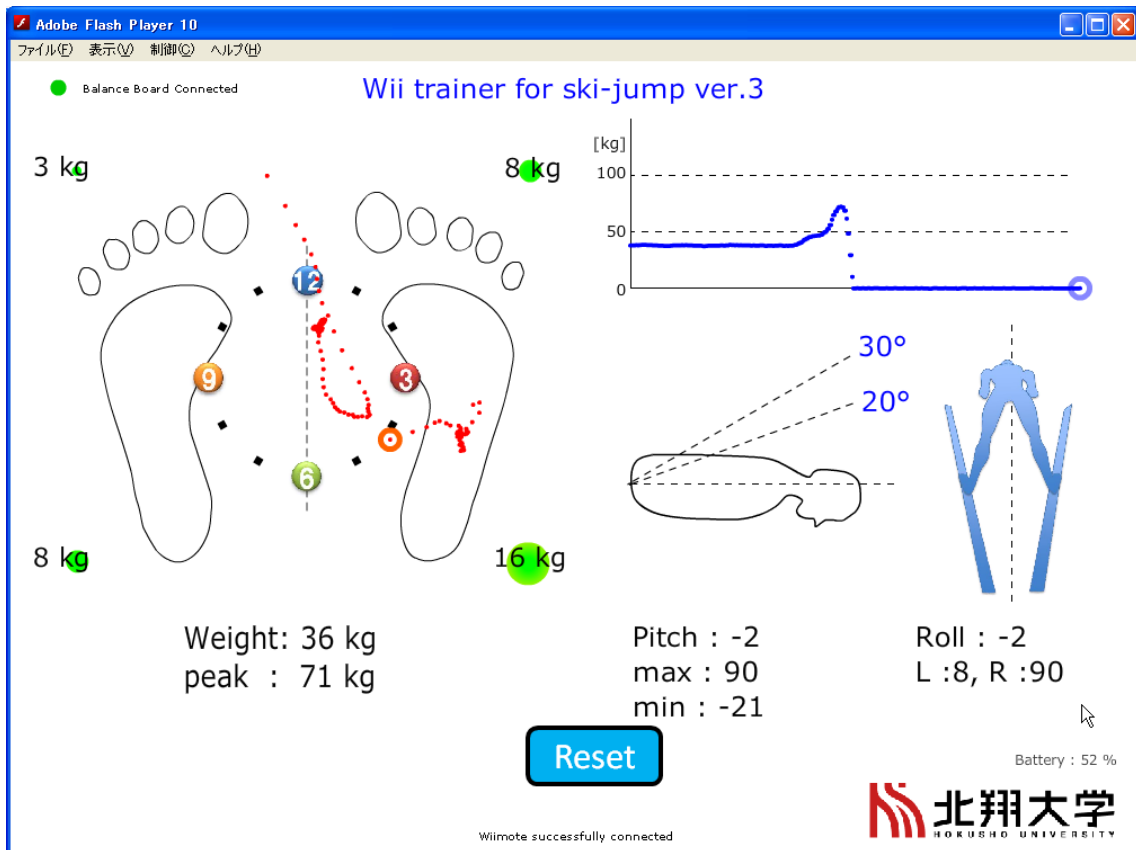
松本 (あ) 選手



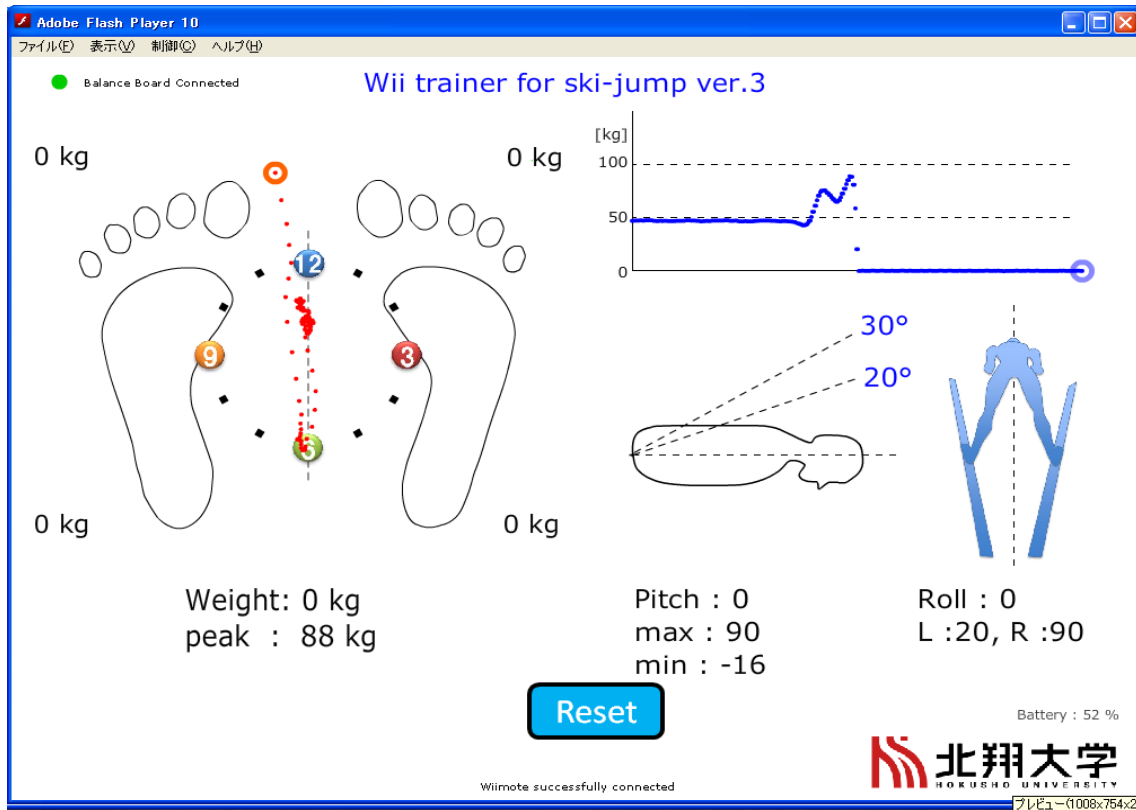
二階堂選手



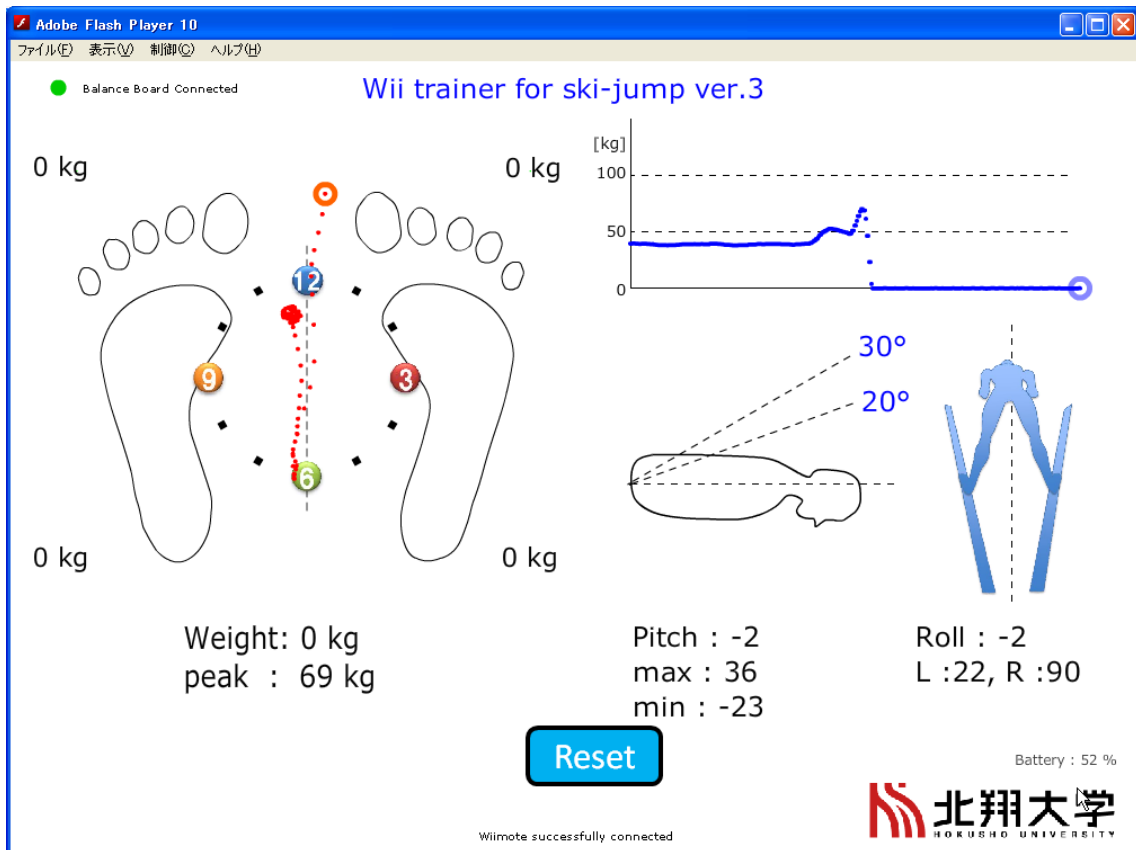
伊藤選手



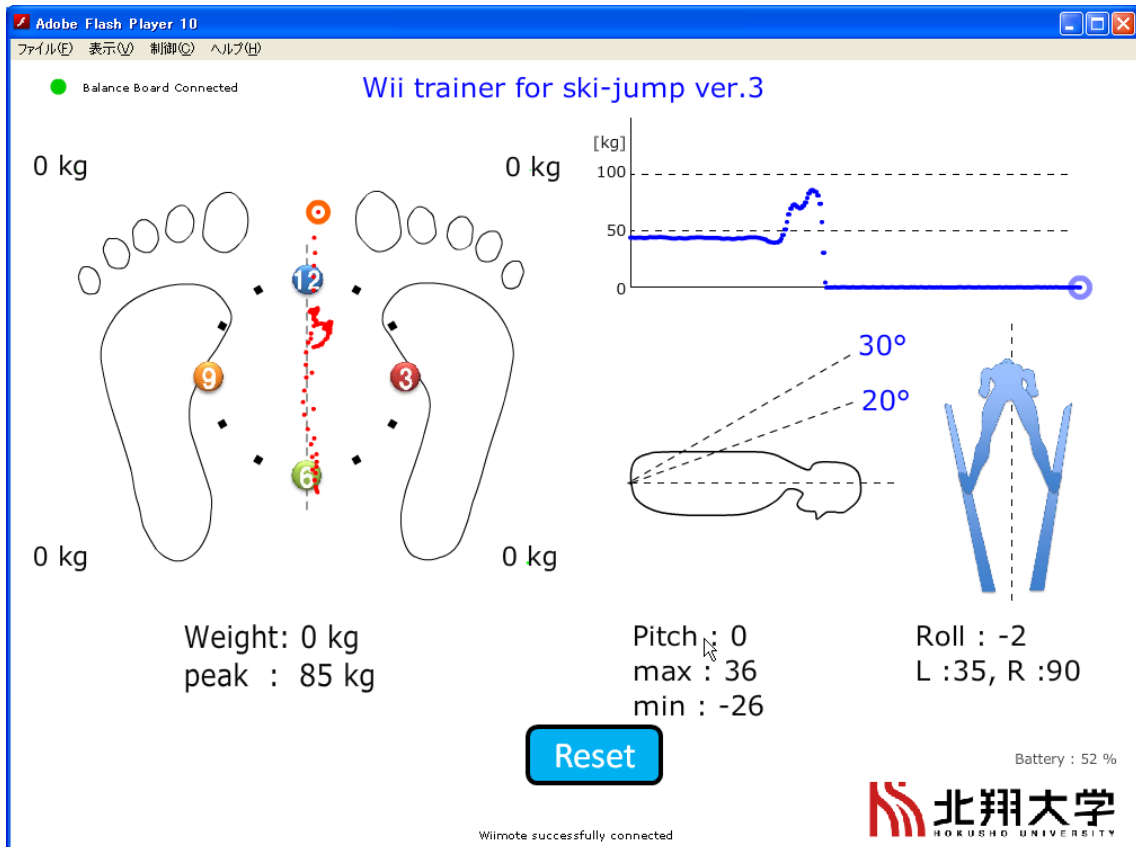
松本（祐）選手



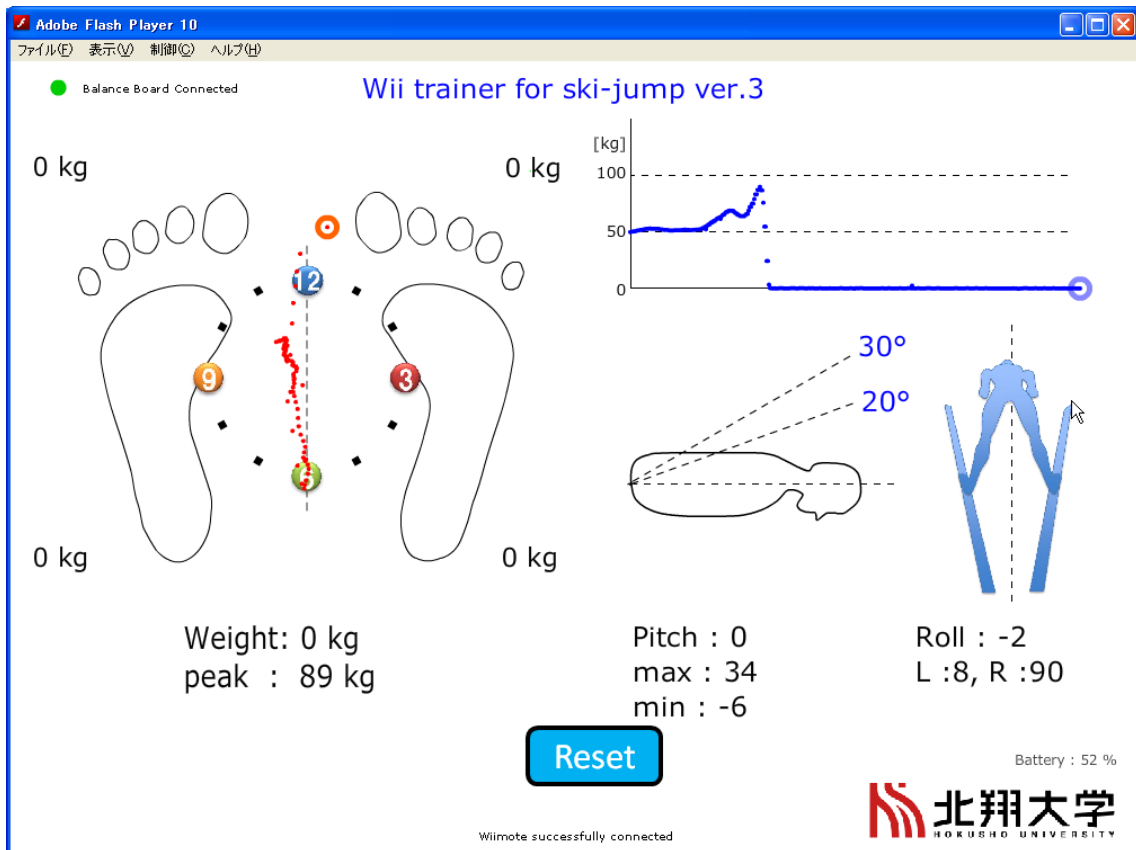
大井 (栞) 選手



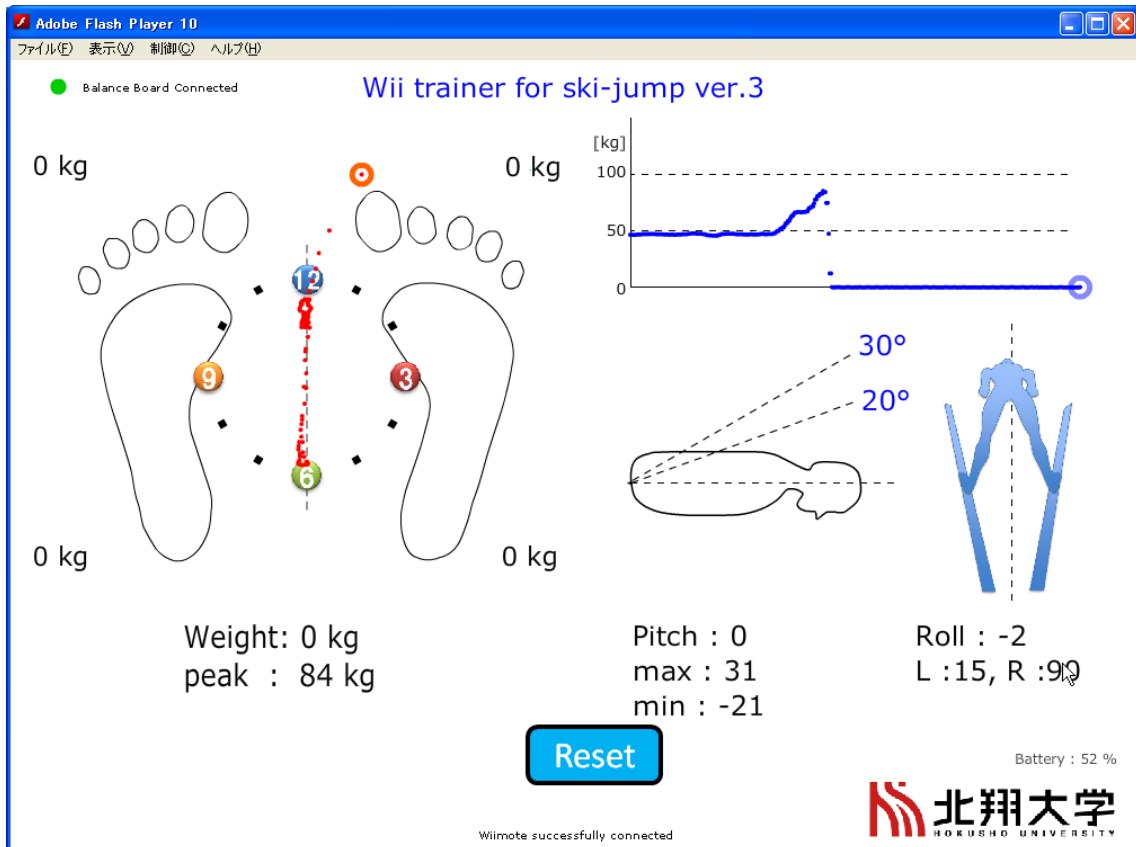
岩佐 (勇) 選手



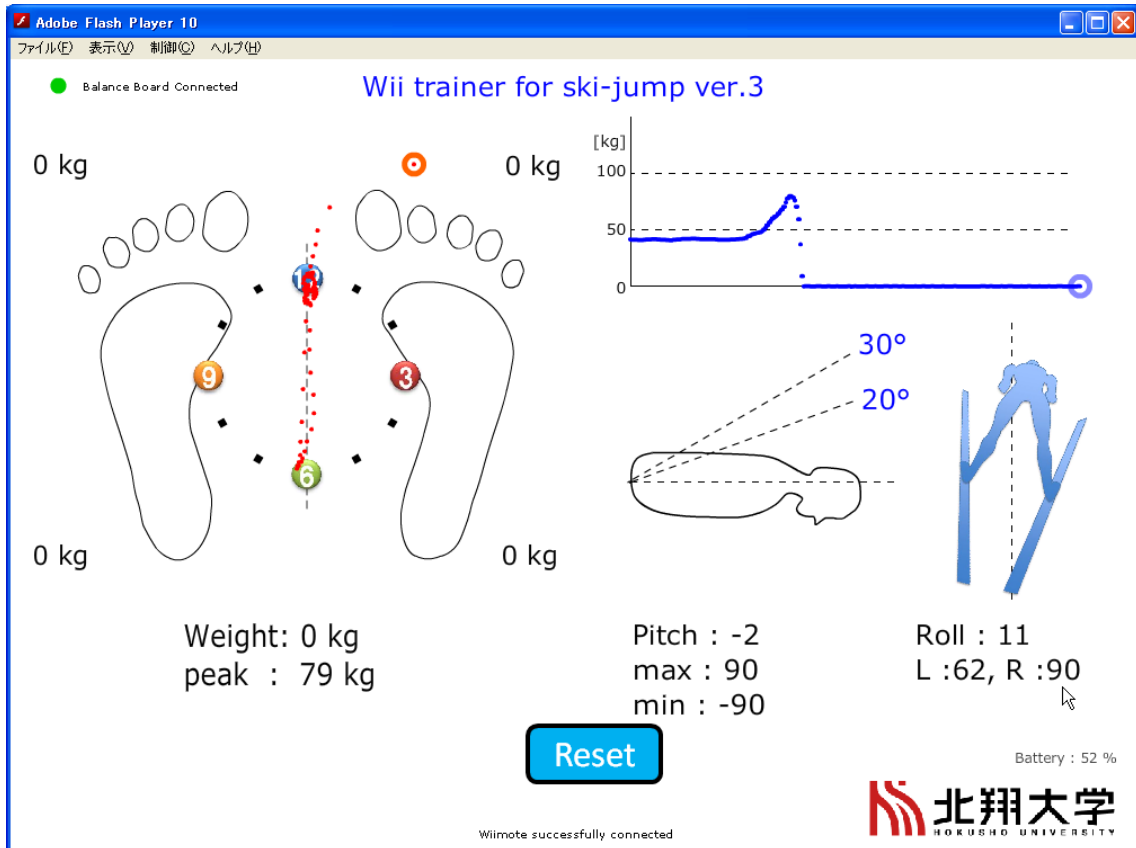
宮町選手



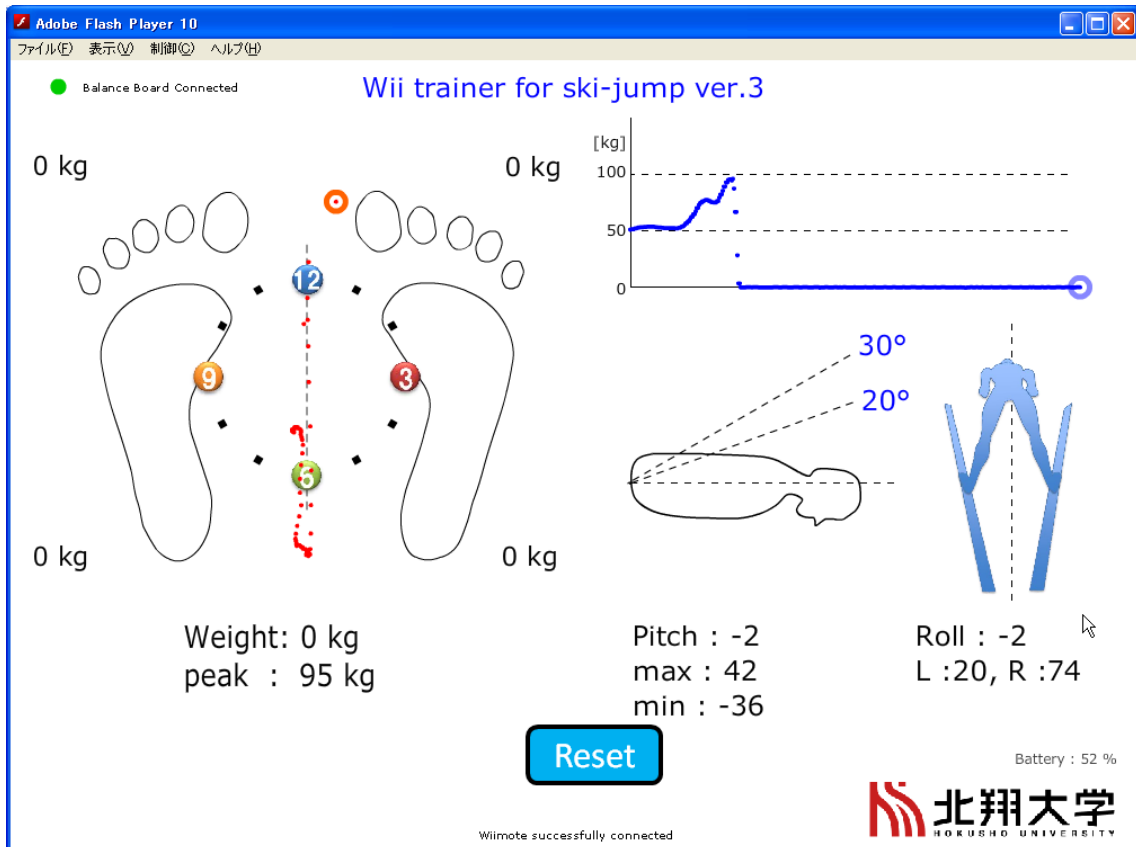
清水 (建) 選手



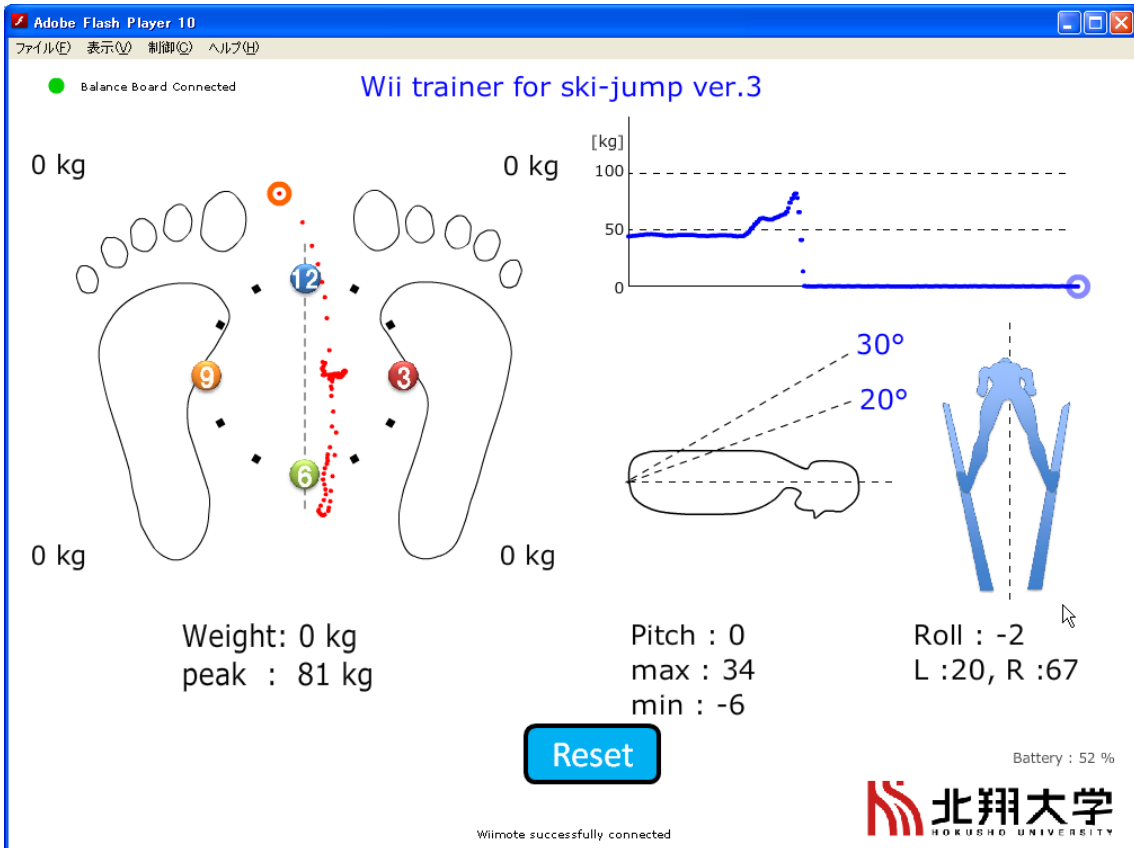
雪田選手



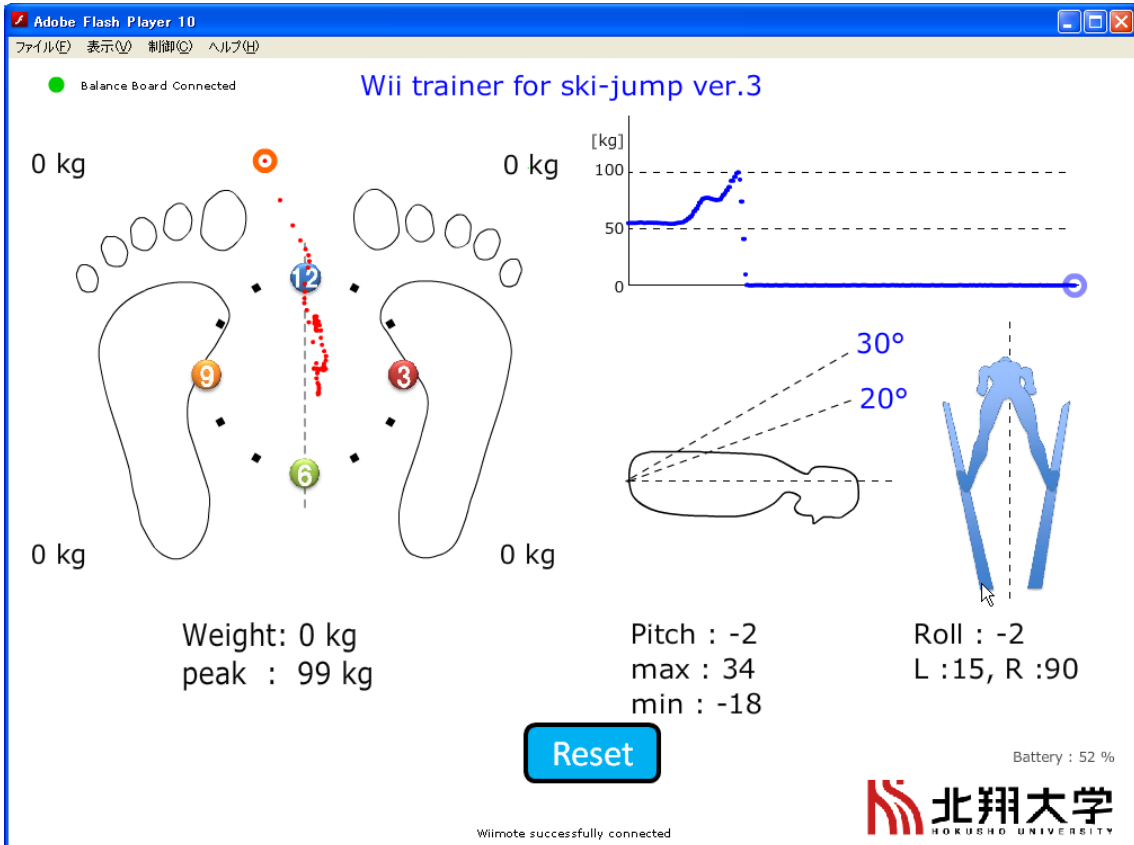
尾形選手



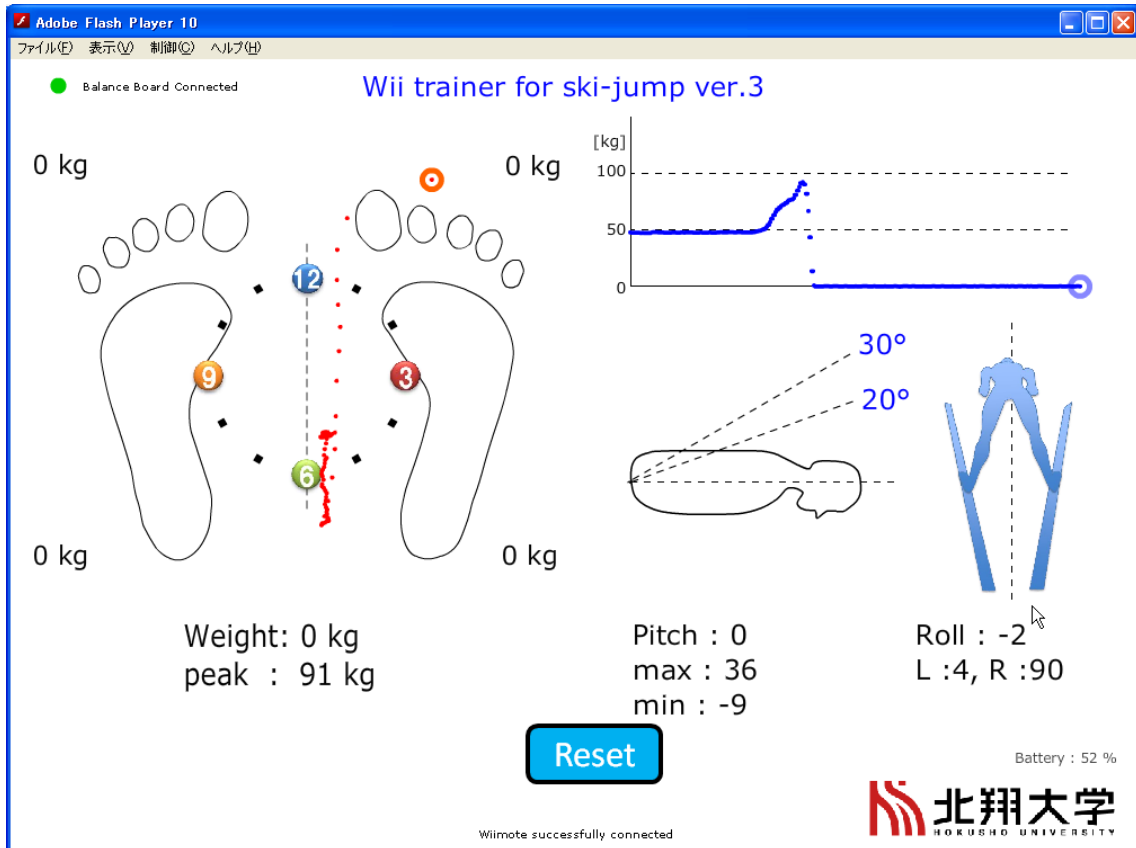
田代 (理) 選手



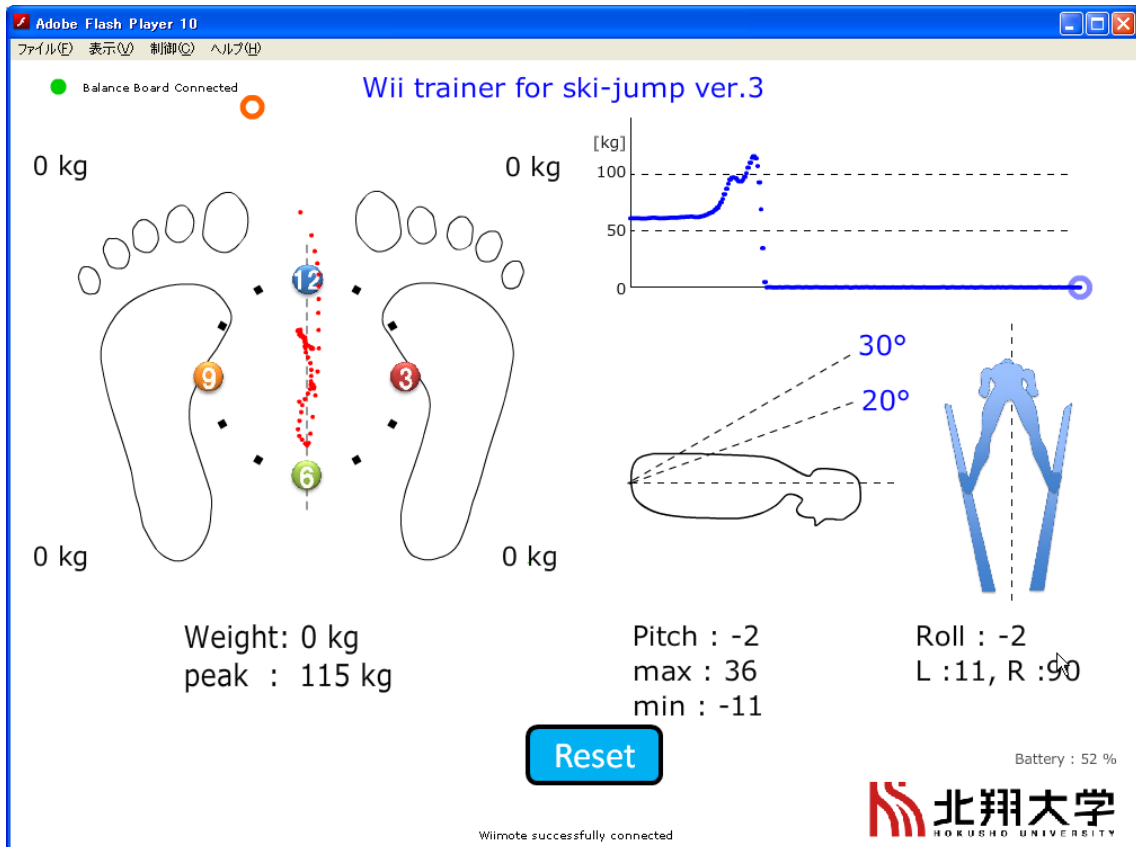
渡邊選手



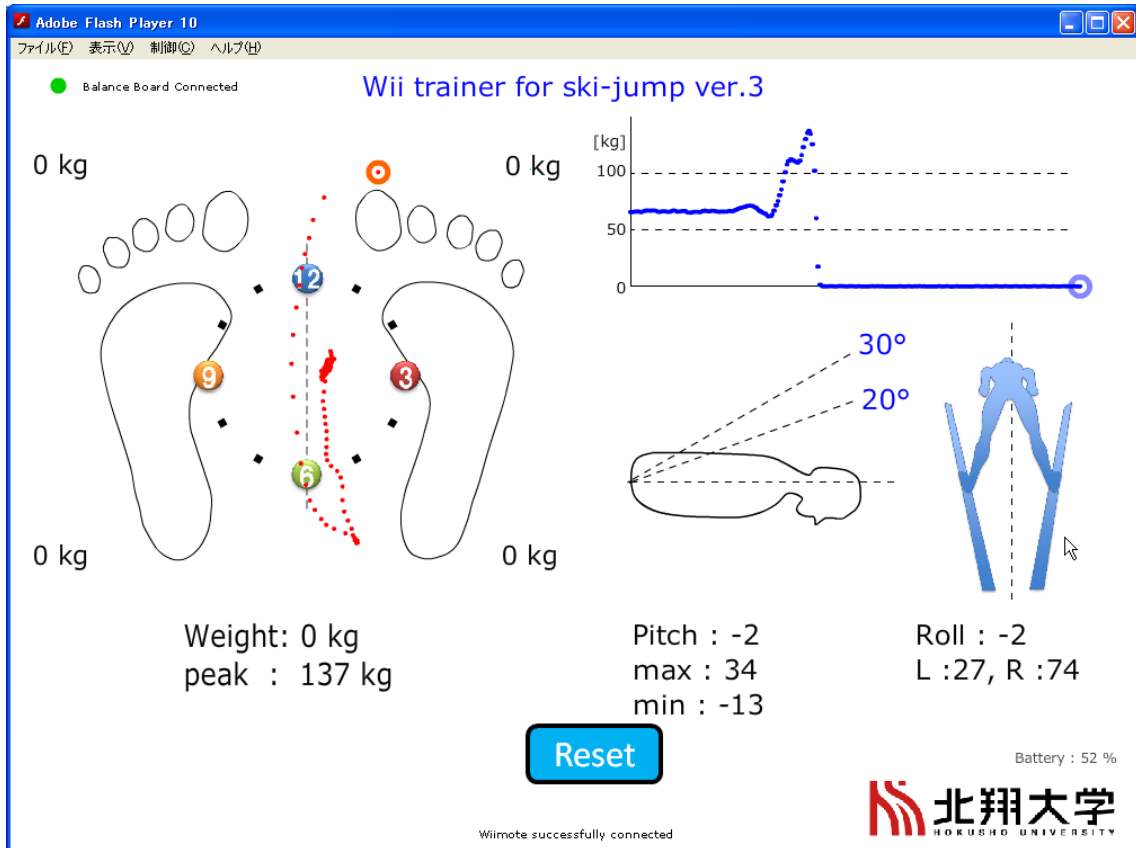
古賀選手



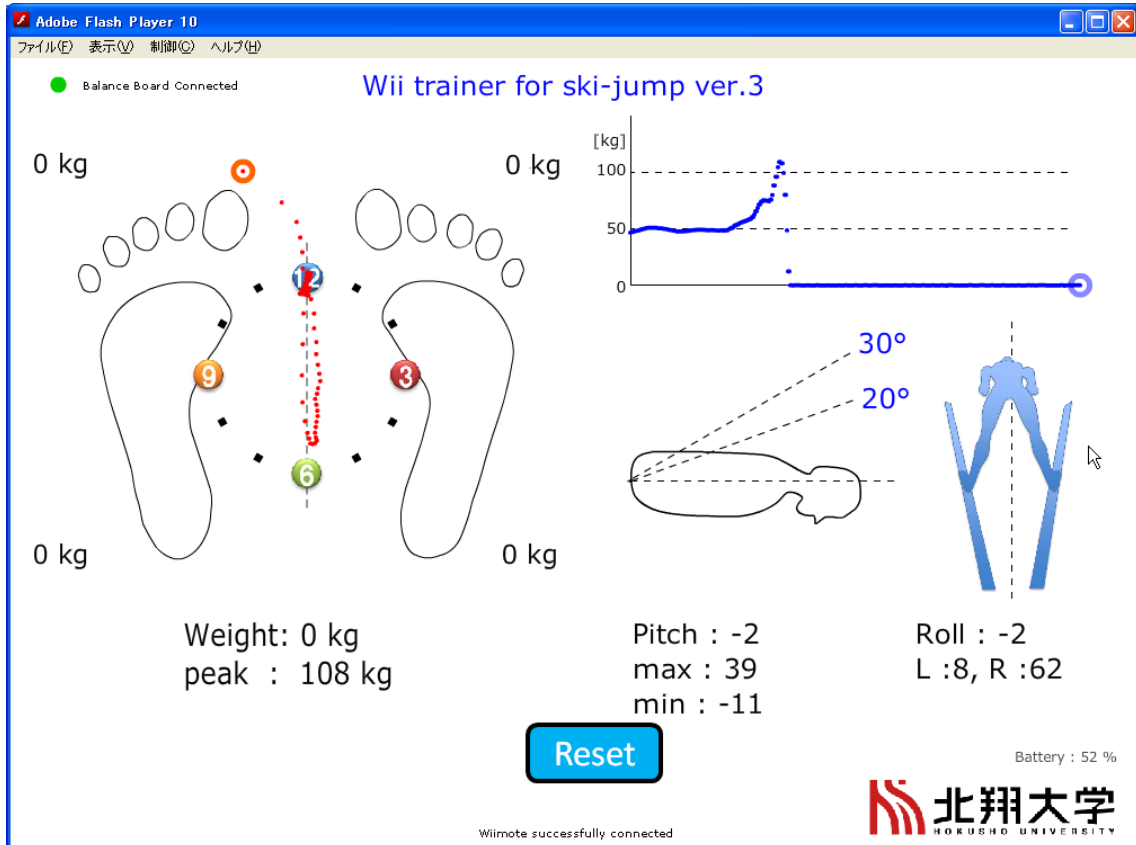
網野選手



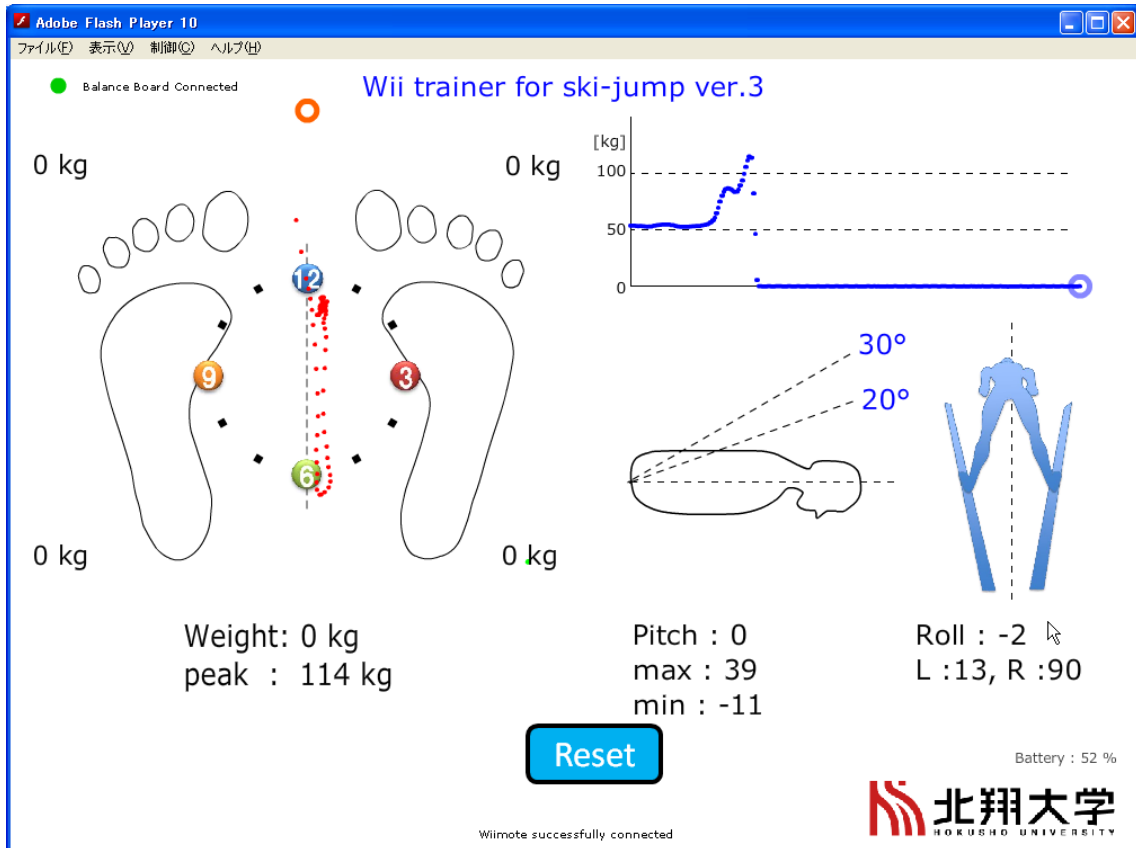
田代 (健) 選手



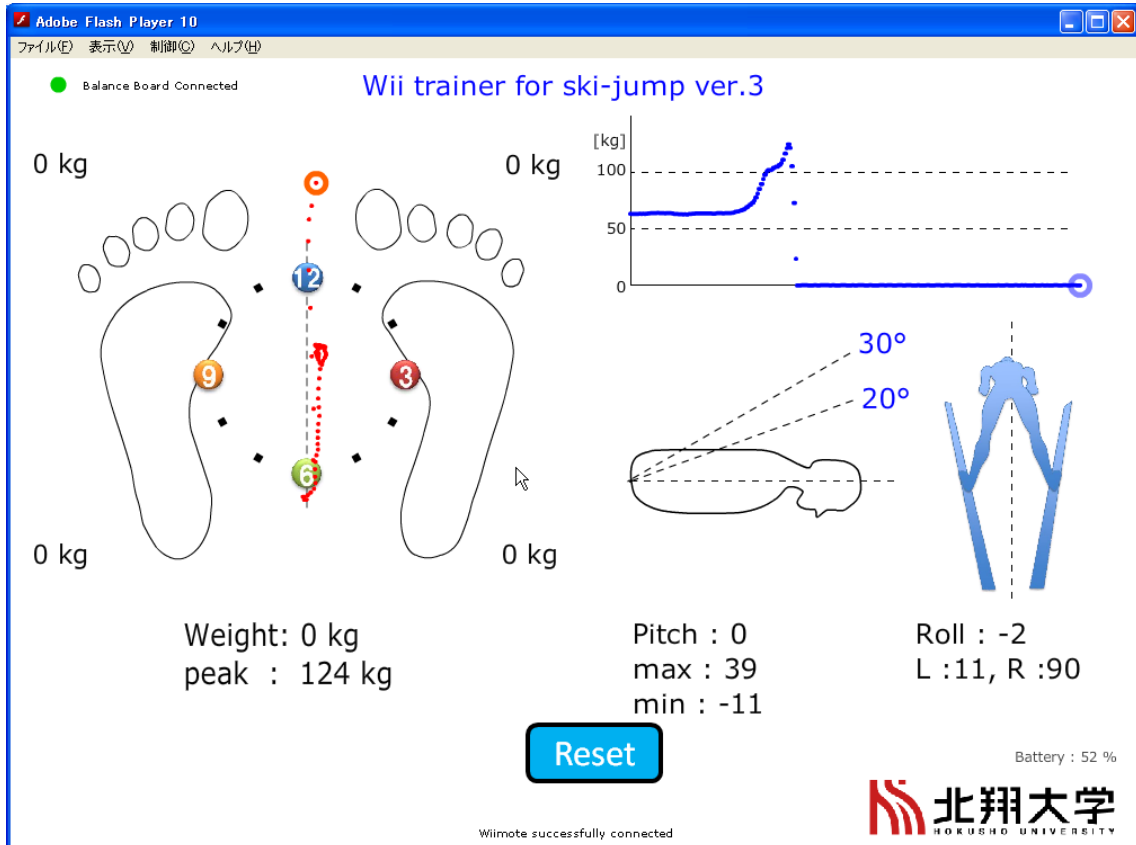
清水 (航) 選手



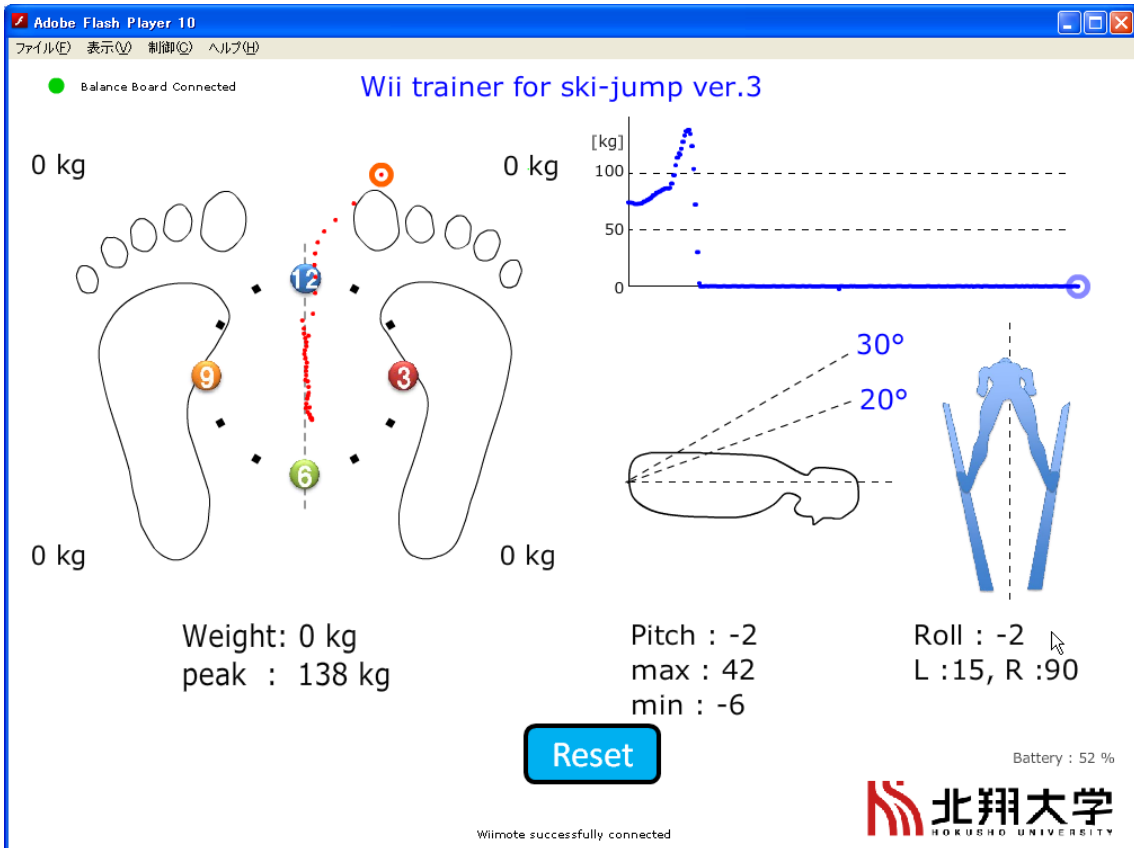
岩佐 (明) 選手



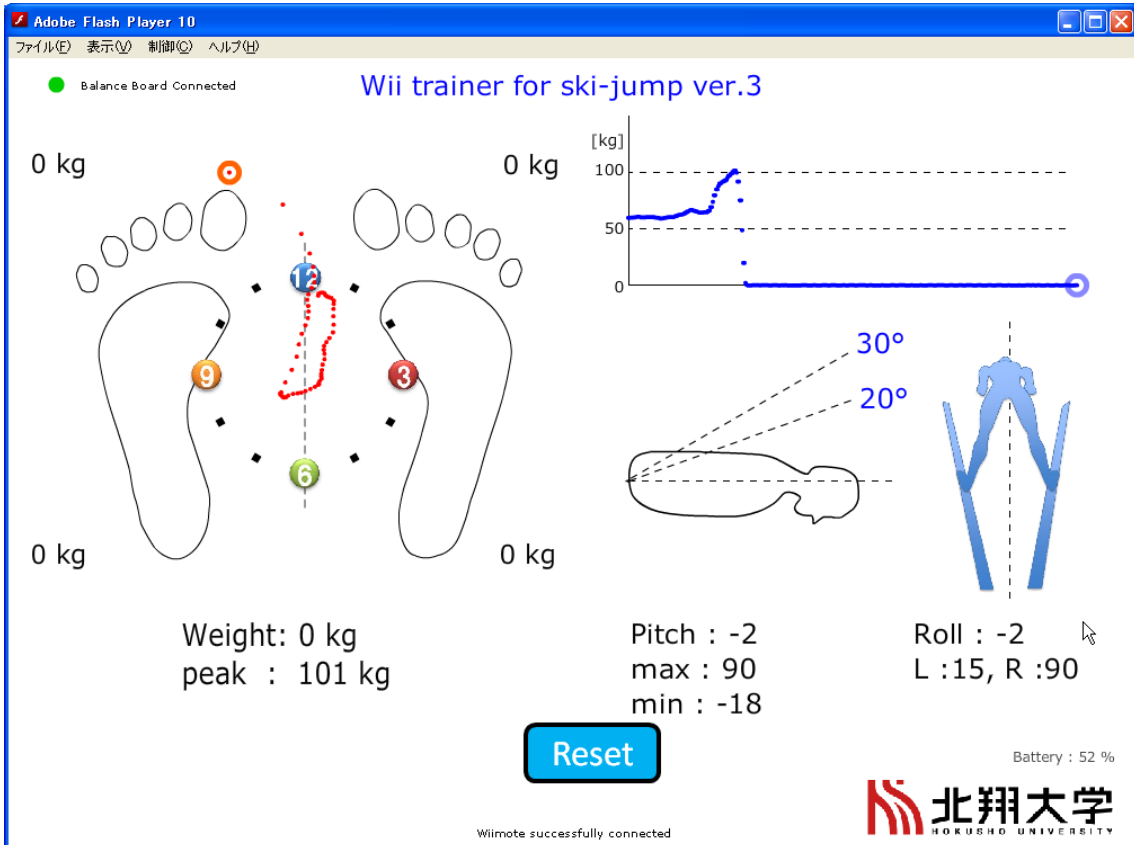
中村選手



中島やすゆき



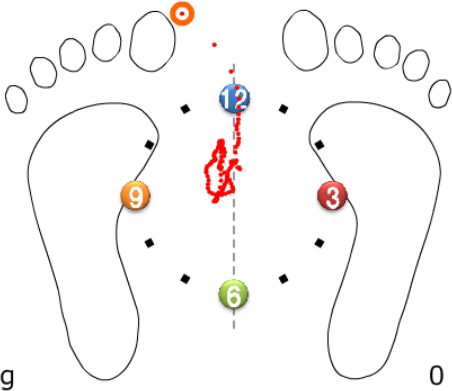
中島たかゆき



Adobe Flash Player 10
ファイル(F) 表示(V) 制御(C) ヘルプ(H)

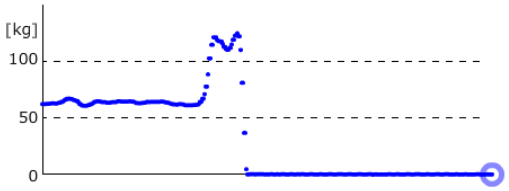
● Balance Board Connected

Wii trainer for ski-jump ver.3

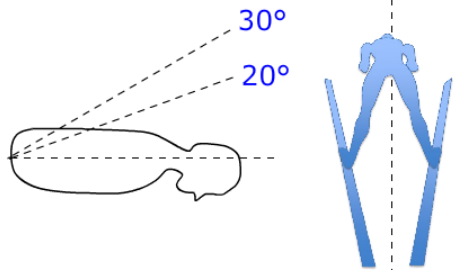


0 kg 0 kg 0 kg 0 kg

Weight: 0 kg
peak : 124 kg



[kg]
100
50
0



30°
20°

Pitch : -2
max : 42
min : -23

Roll : -2
L : 27, R : 90

Reset

Battery : 52 %

北翔大学
HOKUHO UNIVERSITY

Wiimote successfully connected